

Usul: Nîm Sâfyan

112

Süre: 2' x 2 = 4'

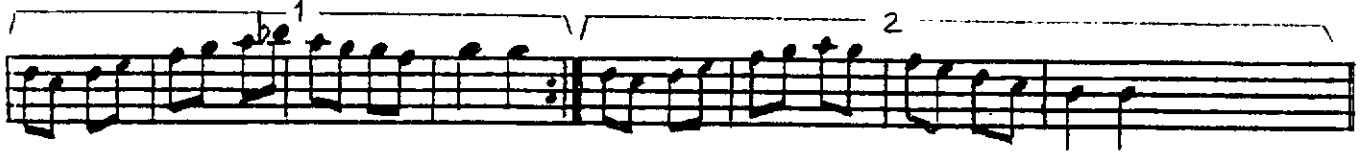
# HÜZZAM ŞARKI

- U M U T -

Güfte: Erdoğan ERŞAN

Beste: Ümit ASIK

16.4.1992



16.4.1992

41

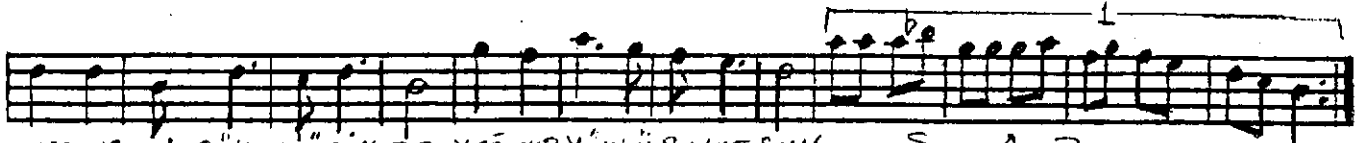
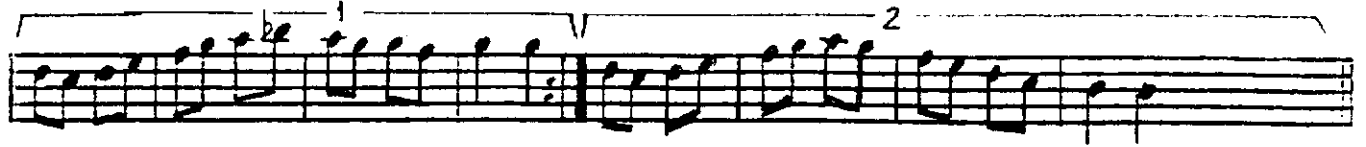
TURHAN TAŞAN  
Nota Arşivi

BEN KAPININ ARDINDA SANKİ SEN ÖNÜNDESİN  
KAPI AÇILIVERSE GİRECEK MİŞ GİBİSİN  
YILLARIN HAS RETİNİ HEPTEN GİDERMEK İÇİN  
KALBİNİ AVUÇLAYIP VERE CEK MİŞ GİBİSİN

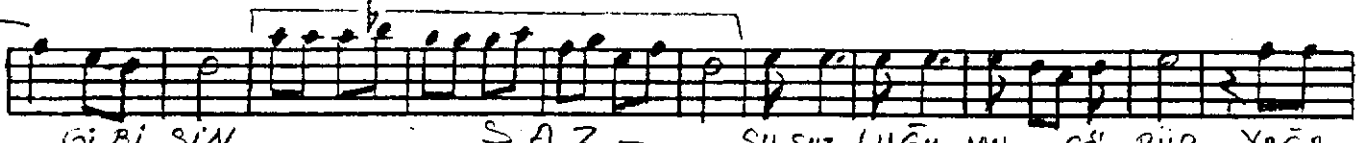
İSUL : Nemsöğütan

# HÜZZAM ŞARKI (2. kuple) - UMUT -

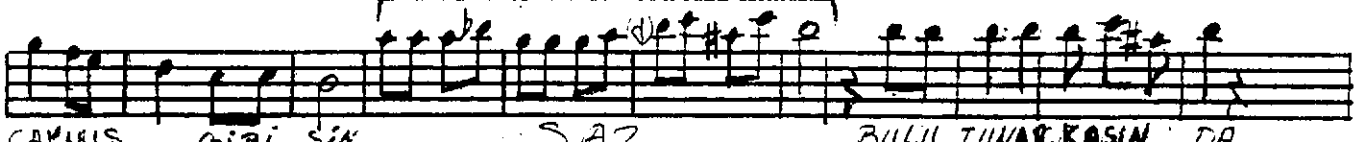
Güfte : Erdoğan ERSAN  
Beste : Ümit AŞIK  
16.4.1992 ERSAN



SUSUZ LUĞU MU GÖ RÜP YAĞA CAK MIŞ



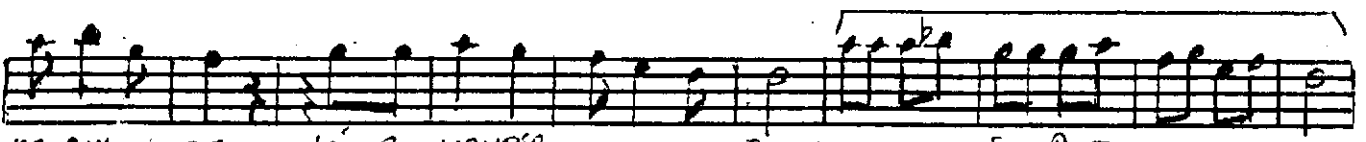
Gİ Bİ SİN - S A Z - SUSUZ LUĞU MU GÖ RÜP YAĞA



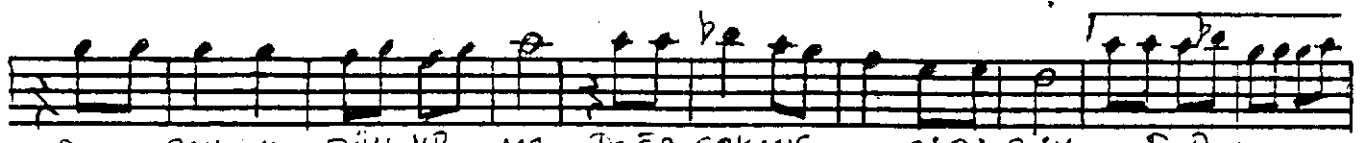
CAKMIŞ Gİ Bİ SİN - S A Z - BULU TUNAR KASIN DA



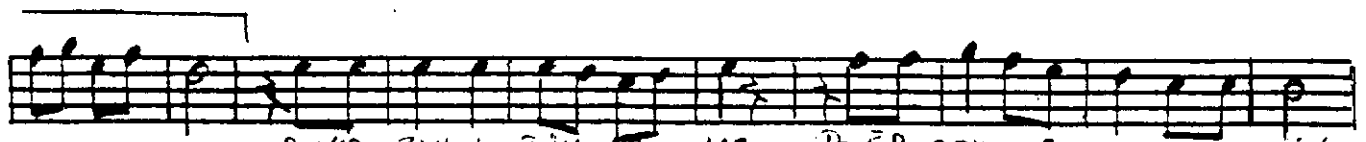
KOCA MANBİR UMUT SUN - S A Z - BULU TUNAR



KASIN DA KOCA MANBİR UMUT SUN - S A Z -



SUKA RANLIK DÜN YÄ MA DOĞA CAKMIŞ Gİ Bİ SİN - S A Z -



SUKA RANLIK DÜN YÄ MA DOĞA CAKMIŞ Gİ Bİ SİN

MASMAVİ GÖK YÜZÜNLE YAĞMUR YÜKLÜ BULUTSUN  
SUSUZ LUĞUNU GÖRÜP YAĞACAKMIŞ GİBİSİN  
BULUTUN ARKASINDA KOCA MANBİR UMUTSUN  
ŞU KARANLIK DÜNYAMA DOĞACAKMIŞ GİBİSİN

TURHAN TAŞAN  
Nota Arşivi